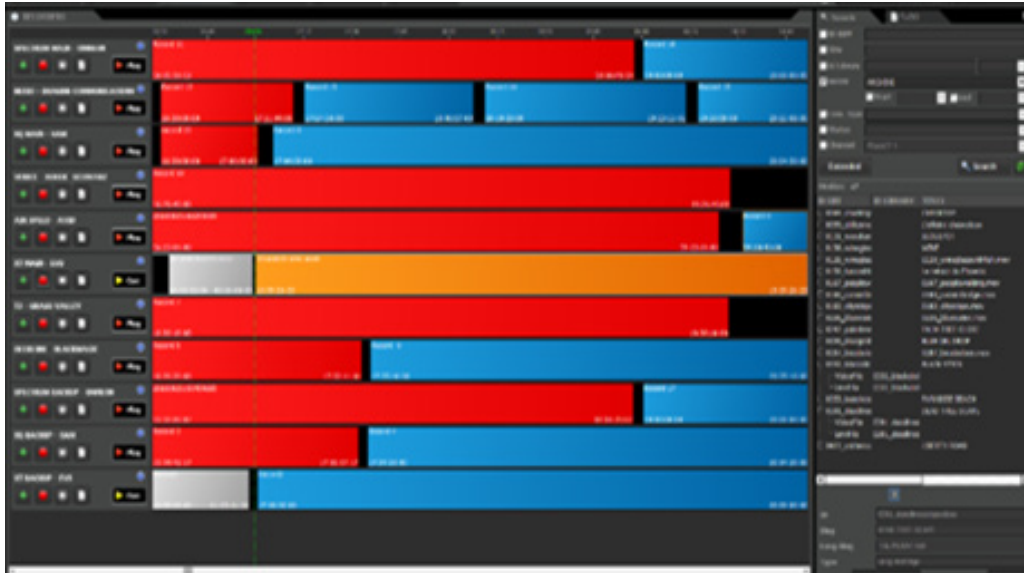




# VIDEO ASSET MANAGEMENT

The complete solution for ingesting, indexing, saving, browsing, tagging, purging and file transfer.



Phoenix Video Management is a complete solution for ingesting, indexing, recording, browsing, tagging, purging and transferring files. It is a modular and configurable, off-the-shelf system that can be adapted to customer needs. This client-server application is directly connected to the Vertex platform which manages the data flows.

## Optimized user interface

The Phoenix Video Manager client application allows the operator to manage all his video media according to different tabs whether it is ingest, indexing or recording of media in order to control the entire chain of production. This intuitive and ergonomic user interface greatly facilitates the daily tasks of operators.

The interface has different tabs allowing access to the indexing, recording, navigation and transfer modules. The «tasks» tab provides access to a dynamic ToDoList.

The system also offers a powerful search engine. It is possible to search for videos using various criteria such as ID, location, title, channel or even a combination of criteria.

## Ingest stream

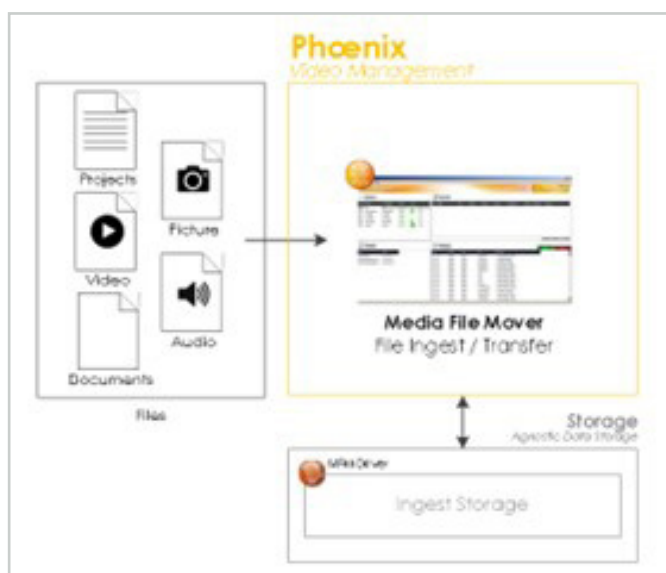
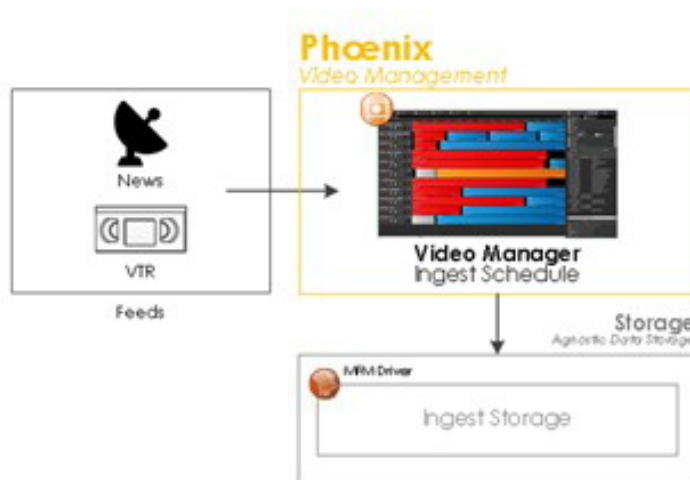
The Phoenix Video Manager offers the ability to manage live programs via «crash» or scheduled recordings. Cassette ingest remains possible.

The schedule for a live recording can be changed at any time even after the recording has already started. The Video Manager back-office application automatically checks audio and video equipment during the acquisition process.



# VIDEO ASSET MANAGEMENT

This module manages an unlimited number of acquisition channels. The system is agnostic and can control different video servers at the same time regardless of their manufacturer. Recording can be scheduled in an optimized way depending on the available encoders.



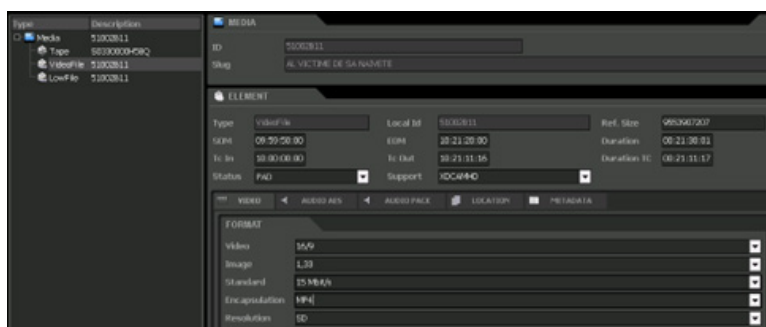
## Ingest files

The Phoenix Video Manager can detect files through the Media File Mover. This back-office solution manages transfer and detection tasks for the entire system. It is also connected to the Vertex platform, which allows direct action on the database. The MFM server sends transfer commands (FXP) to the FTP servers and links them with a system of live modifiable priorities.

## Indexing/Référencing

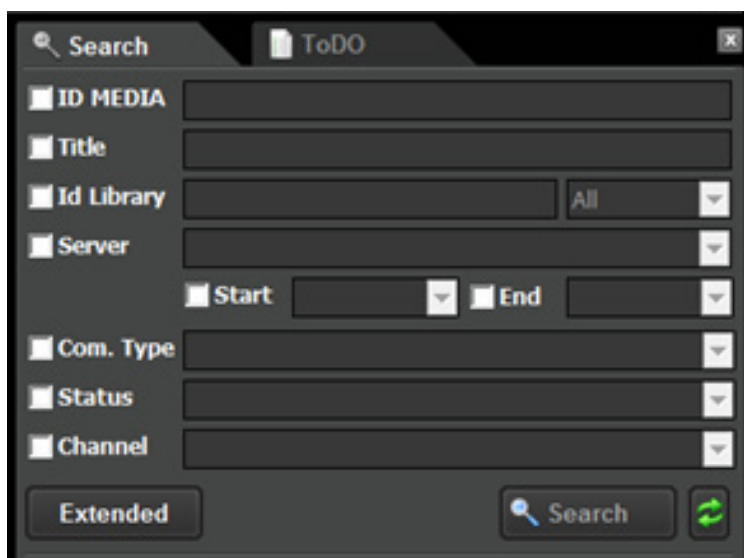
The operator can enrich the media by indexing them. Indexing allows better classification of programs. The operator can thus manage and edit all the metadata of the media and the attached elements. All video and audio details, but also custom metadata defined in the admin tool, are referenced in this module. Operators can also define custom metadata to enable optimal media indexing.

Box: Third-party systems can also enrich the MBT database. The synchronization of the MBT database with the databases of third-party systems (MAM, PAM) via an API module offers endless possibilities.





# VIDEO ASSET MANAGEMENT

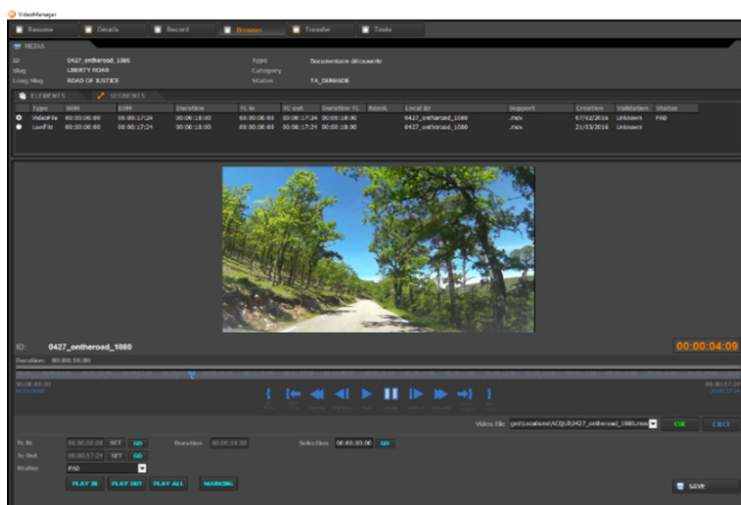


## Navigation

Operators have two options for viewing media. The media player integrated into the Video Manager allows low resolution media to be viewed directly on the client station. It is also possible to control a dedicated decoder, thus making it possible to view the elements in high resolution. The system can be extended with other MBT solutions: Sphere MAM, Sphere Service Manager Workflow Manager or Phoenix Payout Automation.

## Marking and QC

This module also makes it possible to carry out the technical and editorial quality control of the acquired media. The operator can thus select a program and view it. He can then modify the entry point and the exit point (marking) and validate the program by changing the state of the program to «PAD» - Ready to broadcast - for example. Changing the state of a program can trigger automatic workflows linked to the Sphere Service Manager, MBT's workflow engine.



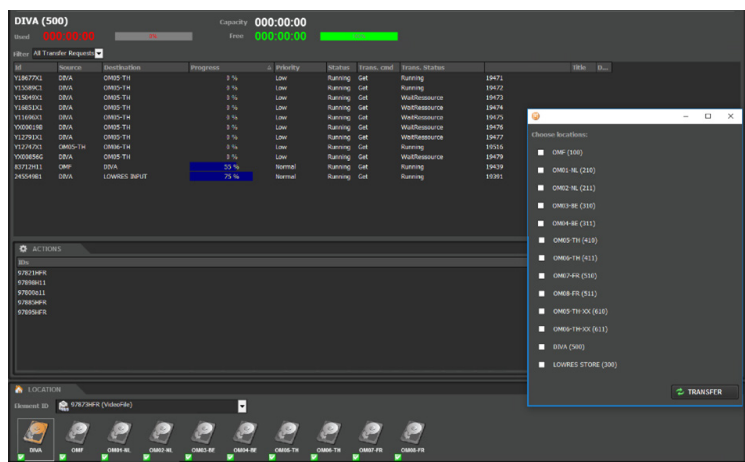
## Transfer and purge

**Transfer, purge or transcode your files with a simple drag and drop**  
Phoenix Video Manager's transfer module manages file transfers from one location to another with a simple drag and drop. The location where the file is present is highlighted: if the file is present on several locations, then the different locations are highlighted. In the history tab, you can see all the transfers made, in progress or planned. This tab also displays any errors encountered. The operator can restart faulty transfers at will once the problem has been solved.



# VIDEO ASSET MANAGEMENT

This module also offers the possibility to manually send the video files to the transcoders and to re-ingest them in the correct format. If the system is connected to Sphere Service Manager, files can be automatically transcoded, transferred and even published depending on how workflows are configured.



### Key Features:

- Controls equipment from all manufacturers
- Modular: acquisition, marking, QC, transfer management
- Smart encoder management
- Powerful search engine
- Operation in symbiosis with MAM, PAM, workflow manager, etc.
- Drag & drop pour les transferts et enregistrements



## Make Your Data Flow

### ABOUT MBT

For more information : [www.mbt.tv](http://www.mbt.tv)

MEDIA & BROADCAST TECHNOLOGIES® - 11 rue de Courtalain - bât C - 77700 Magny-le-Hongre - France

Tél : + 33 (0)1 85 49 22 16 - RCS Meaux - SIREN : 479 487 027